

**Miles  
Supply**

Patented models of the  
**PadHead™**  
polishing & grinding head

Faster Grinding! ... up to 50% faster  
Reduced Dust Particles/Slurry  
Low Cost per Square Foot  
Highest Quality Finish



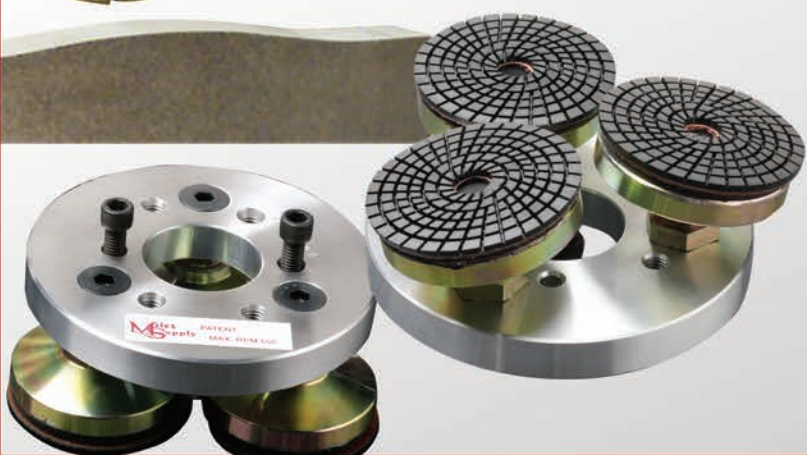
Model II as applied on a Patch Kit & for flat polishing machines

Model C for CNC machines



Features of Model I include:

- Self-leveling floating heads
- Follows contours for serp tops & top polishers
- Velcro attachments



**Multiple Materials:**

- granite
- concrete
- marble
- limestone
- engineered stone
- sandstone, & more...

**WHY UNIQUE & REVOLUTIONARY?**

THE THEORY: Traditional polishing systems force abrasives in one direction creating dull cutting forces resulting in fractured crystals. PadHead™ wears the crystals, rather than fracturing them, providing a more brilliant finish with greatly reduced dust and slurry accumulation.



# Revolutionary PadHead™ polishing & grinding head

- Velcro attachments for most common wet polishing pads and abrasives.
- Maximize production and quality on your radial arm or single head bed polishing machines.
- Up to 50% faster using conventional wet diamond pads than traditional abrasives and plates!

Miles Supply's PadHead™ *polishing & grinding head* is the most unique tool on the market for surface treatments.

Some models are designed to polish or hone flat surfaces. Model I works great on serp tops. They all utilize multiple free rotating heads working off of the resistance of friction principle to accomplish its superior surface cutting action.



**Model I**

Used by Countertop Producers, Restoration Contractors, Monument Manufacturers, Slab Producers, and Concrete Polishers.

Utilize your CNC machine for top polishing or honing with the spring loaded **Model C.**



**Granite  
Marble  
Limestone  
Bluestone**

**Engineered Stone  
Sandstone  
Concrete**



**Model II**



U.S. & International Patents



# HONE GRIND POLISH TEXTURE

attaches to any CNC!



*Velcro attachments for  
polishing pads & abrasives,  
round brushes, and  
metal bond diamonds.*



Miles Supply's PadHead™ polishing & grinding head is the most unique tool on the market for surface treatments. Hone, polish or texture flat surfaces on your CNC.

The PATENTED multiple free rotating heads work off of the resistance of friction to accomplish its superior surface cutting action.

Up to 50% faster using diamond pads than traditional abrasives and plates!

The PATENTED  
**PadHead™**  
polishing & grinding head

