



THE ONE STOP SHOP FOR EVERYTHING TO POLISH, INSTALL & MAINTAIN MARBLE, GRANITE, STONE, TERRAZZO & CONCRETE.

GRINDING & POLISHING MACHINE



HSP - 650 Planetary Floor Grinder
3&4 Head Versions
MOTOR
10HP, 3 Phase
WORKING WIDTH
650mm
SPEED
100-1440rpm
WEIGHT
240kg



HSG - 500 Geared Grinder
MOTOR
10HP, 3 Phase
WORKING WIDTH
480mm
SPEED
100-1440rpm
WEIGHT
225kg



FG - 400 Floor Grinder
MOTOR
5HP, 3 Phase
WORKING WIDTH
400mm
SPEED
720rpm
WEIGHT
110kg



FPM - 400 Floor Preparation Machine
MOTOR
5HP, 3 Phase
WORKING WIDTH
400mm
SPEED
720rpm
WEIGHT
130kg



FPM - 330 Floor Grinding Machine
MOTOR
5HP, 3 Phase
WORKING WIDTH
330mm
SPEED
450rpm
WEIGHT
130kg



Concrete Scarifier
MOTOR
7.5HP, 3Phase
DRUM WIDTH
200mm
CUTTER
78
WEIGHT
117kg





THE ONE STOP SHOP FOR EVERYTHING TO POLISH, INSTALL & MAINTAIN MARBLE, GRANITE, STONE, TERRAZZO & CONCRETE.

POLISHING & CLEANING MACHINES



HSB - 500/430 High Speed Burnisher

MOTOR
7.5Hp, 3Phase/5HP,1Phase
WORKING WIDTH
500/430mm
SPEED
100-1440rpm
WEIGHT
150/145kg



2Hp Burnisher High Speed Burnisher

MOTOR
2HP, 1Phase
WORKING WIDTH
500mm
SPEED
100-1440rpm
WEIGHT
50kg



Single Disc 2.5HP Diamond Polisher

MOTOR
2.5HP, 1Phase
WORKING WIDTH
430mm
SPEED
175rpm
WEIGHT
50kg + (13X2)26kg



Auto Scrubber

POWER
1600w
VOLTAGE
220v/50Hz
TANK
Clean water 27L
Dirty water 31L
SPEED
148rpm
WEIGHT
69kg



60l 3 Motor Vacuum Cleaner

POWER
3000w
VOLTAGE
220v
VACUUM
250mbar
AIR FLOW VOLUME
159l/sec
DRUM
Stainless Steel
WEIGHT
28kg

Dust Collector

MOTOR
5HP, 3Phase
VOLTAGE
415v
VACUUM
300mbar
PRESSURE
300ft3/min
PIPE DIA
45mm
WEIGHT
170kg





THE ONE STOP SHOP FOR EVERYTHING TO POLISH, INSTALL & MAINTAIN MARBLE, GRANITE, STONE, TERRAZZO & CONCRETE.

METAL BOND DIAMOND ABRASIVES & PLATES

DIFFERENT TYPE OF METAL BONDS

CHB FOR SOFT CONCRETE

CHB – Specially designed hard bond metal grinding tool for soft concrete. As soft concrete is more abrasive, these CHB tools give more coverage with lesser abrasion of tool grits. Available in 25/36/60/120/200. Concrete type – Soft Floors.

CHC FOR MEDIUM SOFT CONCRETE

CHC is a medium hard bond for grinding of medium soft concrete. Available in 25/36/60/120/200. Concrete type - Medium soft floors.

AH FOR MEDIUM SOFT CONCRETE

AH- for giving better coverage on medium hard concrete AH is specially designed metal bond tool for free & smooth grinding. Available in 25/36/60/120/200. Concrete type – Medium Floors.

CSE FOR HARD CONCRETE

CSE- Specially designed soft bond metal grinding tool for hard concrete. CSE metal grinding tool ensures smooth grinding on hard floors. Available in 25/36/60/120/200. Concrete Type – Hard Floors.

AVAILABLE IN ALL SHAPES FOR ALL MACHINES



DSMA



DTC



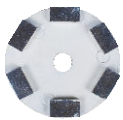
DBDMA



DTMA



DFMX



DKMA



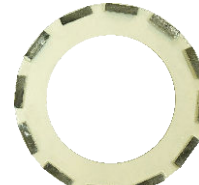
DCMPD 4"



DCMPD 7"



DBP 250



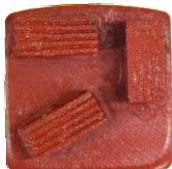
DK 240



DGP 240

METAL BOND DIAMOND 'W' SERIES

METAL BOND 'W' SERIES - Economically designed tool for adhesive removal and grinding rough surfaces. Available in OK. (Coarse Grinding)



DFMVW



DFMVW-MO



DFMVW

PCD TOOLS

PCD Scraper – Best tool for epoxy & coating removal. Available in single & double PCD inserts.



DSMA PCD



DTPCD

BUSH HAMMER



It's a bearing mounted tool that can be fitted to a floor grinder or a hand polisher for giving concrete a bush hammered texture on the top layer. It can be used for breaking epoxy / paint coating on the floor. Available in - 7" 3 Roller Plate for Hand Polisher. FF Shape for floor grinder

ADAPTOR PLATES FOR ALL MAKES



HYBRID DIAMOND ABRASIVES & PADS



DFMRW-OK-CHIPS



DCRMRA

This tool is a combination of metal and resin bond diamond. These tools are in Frankfurt shape or with hook and loop backing that can be fitted to a floor grinding machine. It is ideal for smoothing the scratch pattern. It is very effective for grinding the soft concrete. Available in - OK /36/60/120/200

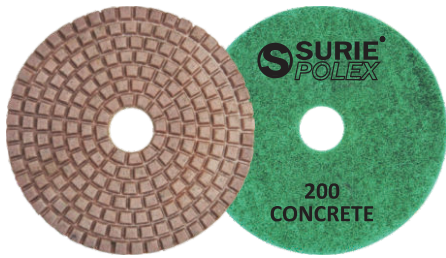
sales@suriepalex.com, www.suriepalex.com



THE ONE STOP SHOP FOR EVERYTHING TO POLISH, INSTALL & MAINTAIN MARBLE, GRANITE, STONE, TERRAZZO & CONCRETE.

RESIN BOND DIAMOND PADS & BRUSHES

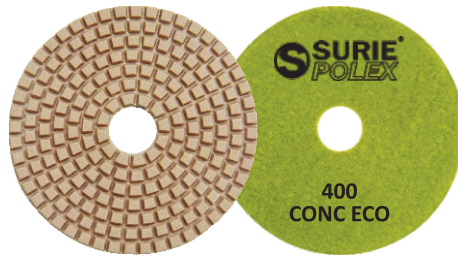
DIFFERENT TYPE OF RESIN BONDS



CONCRETE SERIES

Concrete Series is a very aggressive tool for dry polishing of concrete gives excellent gloss and clarity. Specially designed formula gives optimum coverage and highest gloss on concrete.

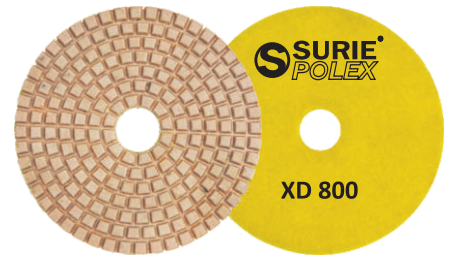
Available in grit: 60/100/200/400/800/1500/3000 and available in all shapes shown below.



CONCRETE-ECO SERIES

Concrete Eco Series is an economically designed concrete polishing resin bond polishing pads give good coverage and gloss.

Available in grit: 60/100/200/400/800/1500/3000 and available in all shapes shown below.

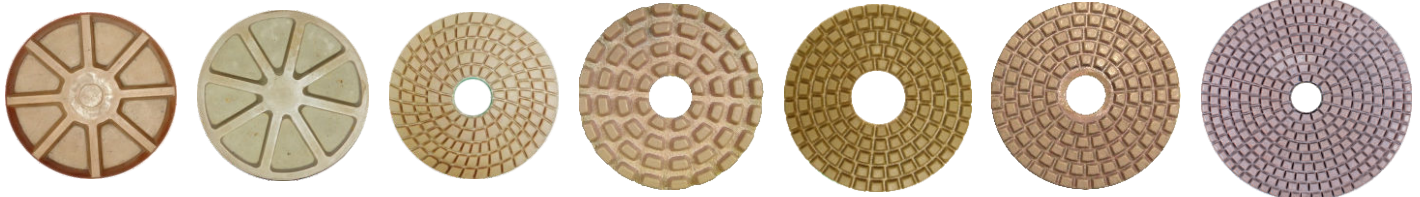


XD SERIES

XD Series is an all surface grinding pad. It is economically priced as compared to concrete pads. These pads are aggressive in action and has good coverage and gloss. It can be used on concrete and terrazzo floors.

Available in grit: 60/100/200/400/800/1500/3000 and available in all shapes shown below.

AVAILABLE IN ALL SHAPES



DJ3R Ø80 X 11mm **DJ4R** Ø100 X 15mm **DFRF3-5S1** Ø80 X 2.75mm **DCRF 4U2** Ø100 X 5mm **DCRF 5U1** Ø100 X 4mm **DCRF 5U3** Ø100 X 2.75mm **DCRF5-9U1** Ø125 X 2.75mm

TROWEL POLISHING PAD



DCRF-6S2

Specially designed concrete pads for Trowel polishing system can be used both wet & dry. Application gives better coverage and gloss with Trowel Polishing System. Available in - 0/1/2/3/4/5/6 Size Available - 6S2: Ø 100 X 3mm

EDGE POLISHING PADS



DCRPD

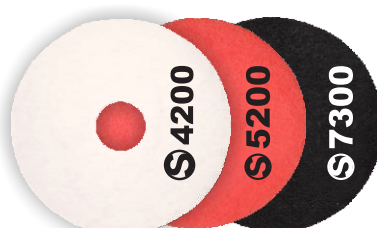
DCRB (SNAIL LOCK)

Edge Polishing Diamond Pads 1. Zero vibration while polishing. 2. Low operator fatigue. 3. No extra coupling required. 4. Replacement for GC Wheels. 5. Replacement for flexible Diamond Pads. 6. Replacement for conventional CRB abrasives. 7. Faster speed of polish. 8. Polishes dry at high speed. 9. Even polishes the surface of Granite because lock nut is below the surface.

CLEANING, BUFFING PADS & BRUSHES



DIAMOND FLOOR PADS



BUFFING AND CLEANING PADS



SOFT & HARD BRUSHES

sales@suriepolex.com, www.suriepolex.com



THE ONE STOP SHOP FOR EVERYTHING TO POLISH, INSTALL & MAINTAIN MARBLE, GRANITE, STONE, TERRAZZO & CONCRETE.

TROWEL POLISHING SYSTEM

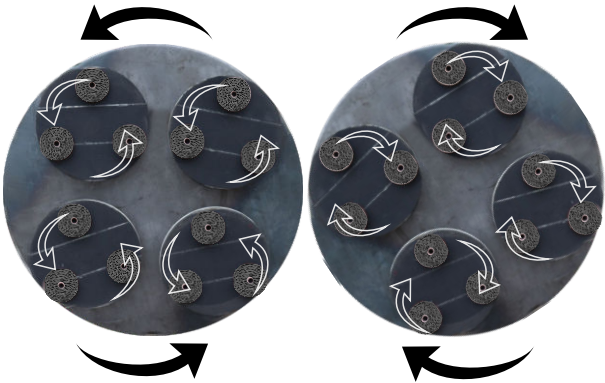


PLANETARY POLISHING ATTACHMENT FOR RIDE ON TROWELS



Surie Poxlex's Planetary Trowel Polishing System is designed for polishing concrete with ride-on power trowels and walk behind power trowels and is ideal for use on large industrial and warehousing projects.

MAIN FEATURES OF OUR TROWEL POLISHING SYSTEM



- Speed:** Our system is very fast: You can fully polish 10,000 sqft per day per ride-on power trowel.
- Cost-Effective:** There is no need to buy new machines and equipment. You can use your existing power trowel. All you need is one set of our planetary trowel polishing system and diamond pads.
- Adaptable:** Our Trowel Polishing System is available in various sizes. This allows it to be used with any ride-on power trowel available in the market. Our system will transform your ordinary power trowel into a planetary concrete polishing machine.
- Planetary:** Our planetary plates are installed on the floating pans. They have bearings which allow for a free/passive planetary movement.
- Finishes:** You can achieve various finishes: low, medium or high gloss. You can also achieve various grades of aggregate exposure.
- Easy:** Our system allows for very easy tool changes with our high quality diamond pads. See our "how to polish" chart below.
- Balance:** Our system provides balanced movement and even tool wear.

PLANETARY TROWEL TOOL HOLDERS



Our Tools System are offered in three styles: 355mm Foam Plates with hook and loop attachment for 900mm pans, and 275mm Foam Plates with hook and loop attachment for 750mm pans, 240mm Foam Plates with hook and loop attachment for 600mm pans.

CONCRETE LAYING MACHINES



Ride On Trowel 36" SPRT-236LR
Model 36" Low Rider
Engine Honda GX690
Working Dia 1870mm
Max Speed 150rpm
Tank 17 Ltr
Weight 280Kg



Power Trowel
MODEL 436E
ENGINE Honda GX160
WORKING WIDTH 900mm
SPEED 130rpm
WEIGHT 102kg



Laser Guided Concrete Screenshot
 Walk Behind Fully Hydraulic SPSL-23B
WORKING WIDTH 2500mm
ENGINE Honda Gx390
MOTOR 13Hp
FREQUENCY 50Hz
SPEED 5m/min
TANK 6.5Ltr
WEIGHT 400kg



Duo Screenshot
 Walk Behind JG-100
SCREENED 1.2m/1.8m/2.4m/
 3.0m/3.7m/4.5m/4.9m
ENGINE HondaGX35
HANDLE 50 dBA
VPM <9m/s sq
WEIGHT 12.7kg



THE ONE STOP SHOP FOR EVERYTHING TO POLISH, INSTALL & MAINTAIN MARBLE, GRANITE, STONE, TERRAZZO & CONCRETE.

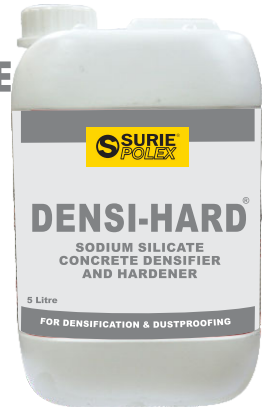
CONCRETE DENSIFIERS, SEALERS, & STAIN PROTECTORS

DENSI HARD LITHIUM SILICATE



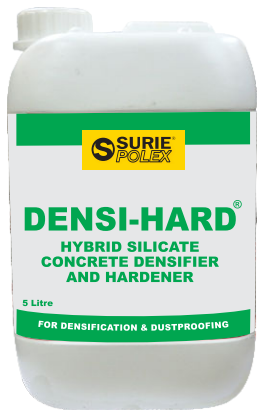
It is a specially formulated Lithium silicate based deep penetrating product for concrete and terrazzo floors. It helps achieve a hard surface that is easy to grind and polish. Its deep-penetrating, non-soluble characteristics provide longer life and higher reflectivity, helping reduce floor maintenance cost. This environmentally friendly treatment reduces efflorescence, improves overall abrasion resistance and reduces dusting. It helps reduce costly wear and damage to diamond abrasives.

DENSI HARD SODIUM SILICATE



It is a specially formulated Sodium silicate based shallow penetrating product for concrete and terrazzo floors. It helps achieve a hard surface that is easy to grind and polish. Its shallow-penetrating, non-soluble characteristics provide longer life and higher reflectivity, helping reduce floor maintenance cost. This environmentally friendly treatment reduces efflorescence, improves overall abrasion resistance and reduces dusting. It helps reduce costly wear and damage to diamond abrasives.

DENSI HARD HYBRID SILICATE



Densi Hard Hybrid Silicate is specially formulated dual action densifier. It's a combination of shallow and deep penetrating densifier which reacts with the top layer and also penetrates deep giving a dual densification effect on the floor. It is best suitable for soft abrasive concrete.

DENSI HARD LS+



Densi Hard LH+ is a lithium based deep penetrating densifier for concrete. It penetrates into the pores of concrete. It increases the abrasion resistance of the surface. It increase the gloss and reflection when polished. It decreases the maintenance cost of concrete floors. It penetrates into the pores of concrete. It increases the abrasion resistance of the surface.

STAINEX

Stainex is a premium, solvent based, deep penetrating sealer that offers maximum protection against dirt, oil & water based stains on absorbent substrates such as sandstone, concrete, marble, granite, limestone etc. It allows moisture vapor transmission and is UV resistant. It may be used for interior and exterior applications.



STAIN PROTECTOR CONCENTRATE



Surie Poxex Stain Protector Concentrate is a breathable partly penetrating and partly film forming sealer. Concrete sealers are used for protecting concrete surfaces from staining, water erosion, extreme temperatures, oil, dirt, and other contaminants. They help improve the durability of concrete and at the same time manage their appearance.

SHINER

This is a high quality wax based shiner used for polishing edges, moldings & skirting. Gives high gloss when used with final buff or white pad. Suitable for indoor & outdoor application.





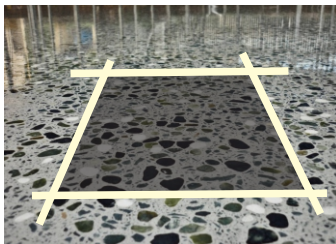
THE ONE STOP SHOP FOR EVERYTHING TO POLISH, INSTALL & MAINTAIN MARBLE, GRANITE, STONE, TERRAZZO & CONCRETE.

SURIE POLEX CONCRETE COLOR DYES

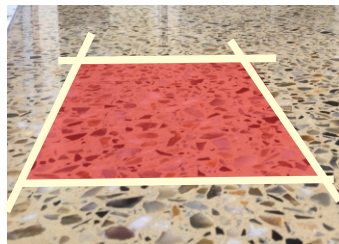


Surie Poxex Dyes are designed specifically for polished and exposed concrete. Our dyes penetrate into the surface of the concrete slab for extremely long-lasting color that will not wear from daily usage. Our dyes can be used as a base color or touch up for concrete that has received integral color, dry shake hardeners, acid stains or even layered to create a truly unique, mottled effect.

AVAILABLE COLOR SHADES



MIDNIGHT BLACK



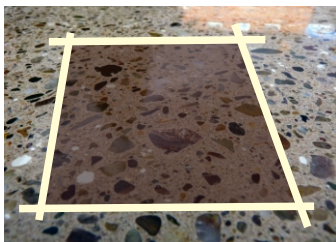
RED



BLUE



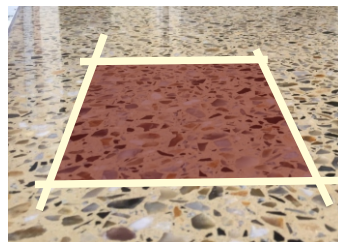
YELLOW



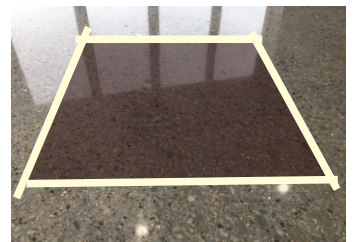
CHOCOLATE BROWN



ORANGE RED



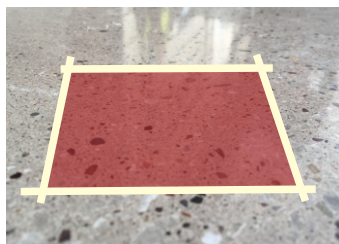
DEEP RED



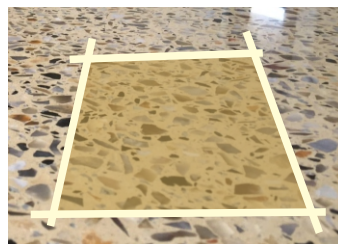
DARK BROWN



BROWN



CHERRY BROWN



WALNUT



GREEN

sales@suriepolex.com, www.suriepolex.com



THE ONE STOP SHOP FOR EVERYTHING TO POLISH, INSTALL & MAINTAIN MARBLE, GRANITE, STONE, TERRAZZO & CONCRETE.

HOW TO POLISH CONCRETE

HOW TO DENSIFY (DUST-PROOF) LEVEL FLOORS				
SN	Procedure	Item Code	Photo	Remarks
1	Lightly grind the floor with Diamond Flexible Pad DCRF-200.	DCRF-200		This is done to open up the pores of the concrete. This step is essential for Densifier penetration.
2	Apply the Densifer on the concrete floor.	Densi-Hard Lithium Silicate/ Sodium Silicate		Apply with microfiber mop and spread uniformly. Apply more where required.
3	Burnish with Diamond Flexible Pad 800.	DCRF 400/800		Use Diamond Dot Pad with a High Speed Burnisher.

HOW TO DENSIFY (DUST-PROOF) UNEVEN FLOORS				
SN	Procedure	Item Code	Photo	Remarks
1	Grind the floor with Metal Bond 200 grit.	DSMA C-200		This is done to open up the pores of the concrete. This step is essential for Densifier penetration.
2	Grind the floor with Resin Bond 200 grit till the floor	DCRF-7U1 R-200		This step is essential to ensure no scratches remain after Densification.
3	Apply the Densifer on the concrete floor.	Densi-Hard Lithium Silicate/ Sodium Silicate		Apply with microfiber mop and spread uniformly. Apply more where required.
4	Burnish with Diamond Flexible Pad 400.	DCRF-400		Use Diamond Dot Pad with a High Speed Burnisher.

HOW TO CONCRETE				
SN	Procedure	Item Code	Photo	Remarks
1	Grind the floor with Metal Bond 120 grit. For uneven floors also use 36 and	DSMA C-120		A good level is a prerequisite for good uniform final finish. Improper first grinding will lead to a patchy finish.
2	Grind the floor with Metal Bond 200 grit (Ideal to start with this step on level floors).	DSMA C-200		Minor level differences and the scratches of Metal Bond 200 grit was removed.
3	Grind the floor with Resin Pad 100 grit.	DCRF 7U1R 100		The 100 Resin is used to remove the scratches of Metal Bond 200 grit.
4	Grout the floor to repair pinholes and cracks.	Grout Repair		Grouting is done using a mixture of cement, latex, water and concrete dust from the dust collector.
5	Grind the floor with Resin Pad 200 grit till the floor is	DCRF 7U1R 200		This step is essential to ensure no scratches remain after Densification.
6	Apply the Densifer on the concrete floor.	Densi-Hard Lithium Silicate/ Sodium Silicate		Apply with Microfiber mop and spread uniformly. Apply more in areas where penetration is faster.
7	Grind the floor with Resin Bond 400 grit.	DCRF 7U1R 400		This step will give a nice smooth finish to the floor. A light gloss appears.
8	Polish the floor with Resin Bond 800 grit.	DCRF 7U1R 800		A dull shine will appear but the reflection will be sharp. This is essential for sharp final finish. Color and gloss both increase.
9	Polish the floor with Resin Bond 1500 grit.	DCRF 7U1R 1500		Both color and sharpness improve substantially after this step.
10	Burnishing with Diamond Flexible Pad DCRF 3000.	DCRF-3000		Use the Diamond Dot Pad with a High Speed Burnisher. A high gloss will appear after this step. Reflection will be sharp.
11	Apply Stain Protector and burnish with Diamond	White Pad & Stain Protectant		Gives a brilliant high shine and protects the floor from stains.

HOW TO DYE & POLISH CONCRETE				
SN	Procedure	Item Code	Photo	Remarks
1	Grind the floor with Metal Bond 120 grit. For uneven floors also use 36 and 60 grit.	DSMA-C-120		A good level is a prerequisite for good uniform final finish. Improper first grinding will lead to a patchy finish.
2	Grind the floor with Metal Bond 200 grit (Ideal to start with this step on level floors).	DSMA-C-200		Minor level differences and the scratches of Metal Bond 200 grit was removed.
3	Grind the floor with Resin Pad 100 grit.	DCRF-7U1-R-100		The 100 Resin is used to remove the scratches of Metal Bond 200 grit.
4	Grout the floor to repair pinholes and cracks.	Grout Repair		Grouting is done using a mixture of cement, latex, water and concrete dust from the dust collector.
5	Grind the floor with Resin Pad 200 grit till the floor is scratch free.	DCRF-7U1-R-200		This step is essential to ensure no scratches remain after Densification.
6	Apply the Densifer on the concrete floor.	Densi-Hard Lithium Silicate/ Sodium Silicate		Apply with Microfiber mop and spread uniformly. Apply more in areas where penetration is faster.
7	Grind the floor with Resin Bond 400 grit.	DCRF-7U1-R-400		This step will give a nice smooth finish to the floor. A light gloss appears.
8	Apply the first coat of Surie Poxex Color Dye (on hard concrete apply 1st coat before densifier.)	Surie Poxex Color Dye. see color chart for all colors.		Dilute the Dye in 1 gallon of acetone and spray on the floor.
9	Polish the floor with Resin Bond 800 grit.	DCRF-7U1-R-800		A dull shine will appear but the reflection will be sharp. This is essential for sharp final finish. Color and gloss both increase.
10	Apply the second coat of Surie Poxex Color Dye.	Surie Poxex Color Dye. see color chart for all colors.		Dilute the Dye in gallon of acetone and spray on the floor.
11	Polish the floor with Resin Bond 1500 grit.	DCRF-7U1-R-1500		Both color and sharpness improve substantially after this step.
12	Burnishing with Diamond Flexible Pad DCRF-3000.	DCRF-3000		Use the Diamond Dot Pad with a High Speed Burnisher. A high gloss will appear after this step. Reflection will be sharp.
13	Apply Stain Protector and burnish with Diamond Pad 3000 grit.	White Pad & Stain Protectant		Gives a brilliant high shine and protects the floor from stains.

NOTE: For finest finish ensure scratch-free surface before application of densifier. After Densification scratch removal is very tedious. Level grinding is not a solution for poor casting of concrete floors. SURIE POLEX recommends dry grinding and dry polishing on concrete. A Dust Collector needs to be used in tandem with the Concrete Grinding machine to ensure best results. Densifiers are applied on dry floors. With dry grinding there is no need to arrange for water or remove sludge. Simply empty the dust collector drum. 28 Days curing recommended for concrete floors for best result. Contact us for technical queries.

Today laying of a concrete floor, keeping in mind that flooring constitutes about 25% of the cost of the project, has become very scientific. Very efficient methods have been developed and continue to be developed to obtain a long lasting surface which provides for all material movements without damage to material handling equipment. As the level of robotisation increases, the importance of the concrete floor will increase.